

Appendix G: Soil Permeability Map

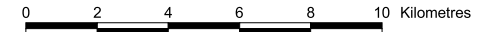
Copyright
 This document incorporates data which is:
 © Commonwealth of Australia (Geoscience Australia) 2002
 The Data has been used in this document with the permission of Geoscience Australia. Geoscience Australia has not evaluated the Data as incorporated within this document, and therefore gives no warranty regarding its accuracy, completeness, currency or suitability for any particular purpose.
 Sinclair Knight Merz Pty. Ltd. does not warrant that this document is definitive nor free of error and does not accept liability for any loss caused or arising from reliance upon information provided herein.
 Compiled from:
 Sargeant and Imhof (2000) 'Major Agricultural Soils in the Maffra Region' prepared for the Victorian Resource Atlas Project by Agriculture Victoria



Refer to Sinclair Knight Merz document
 I:\wcm\wc01825\gis\arcview\Soil Permeability_2.apr;
 Soil Permeability Layout

Macalister Irrigation District SOIL PERMEABILITY

(Version 1, October 2001)



Soil Permeability Classes

- RF1 - River Flats 1, Very High permeability
- RF2 - River Flats 2, High permeability
- RF3 - River Flats 3, Moderate permeability
- RF4 - River Flats 4, Low permeability
- P1 - Plains 1, Moderate to high permeability
- P2 - Plains 2, Moderate permeability
- P3 - Plains 3, Low permeability
- P4 - Plains 4, Very Low permeability
- VL - Various landforms, Very Low permeability

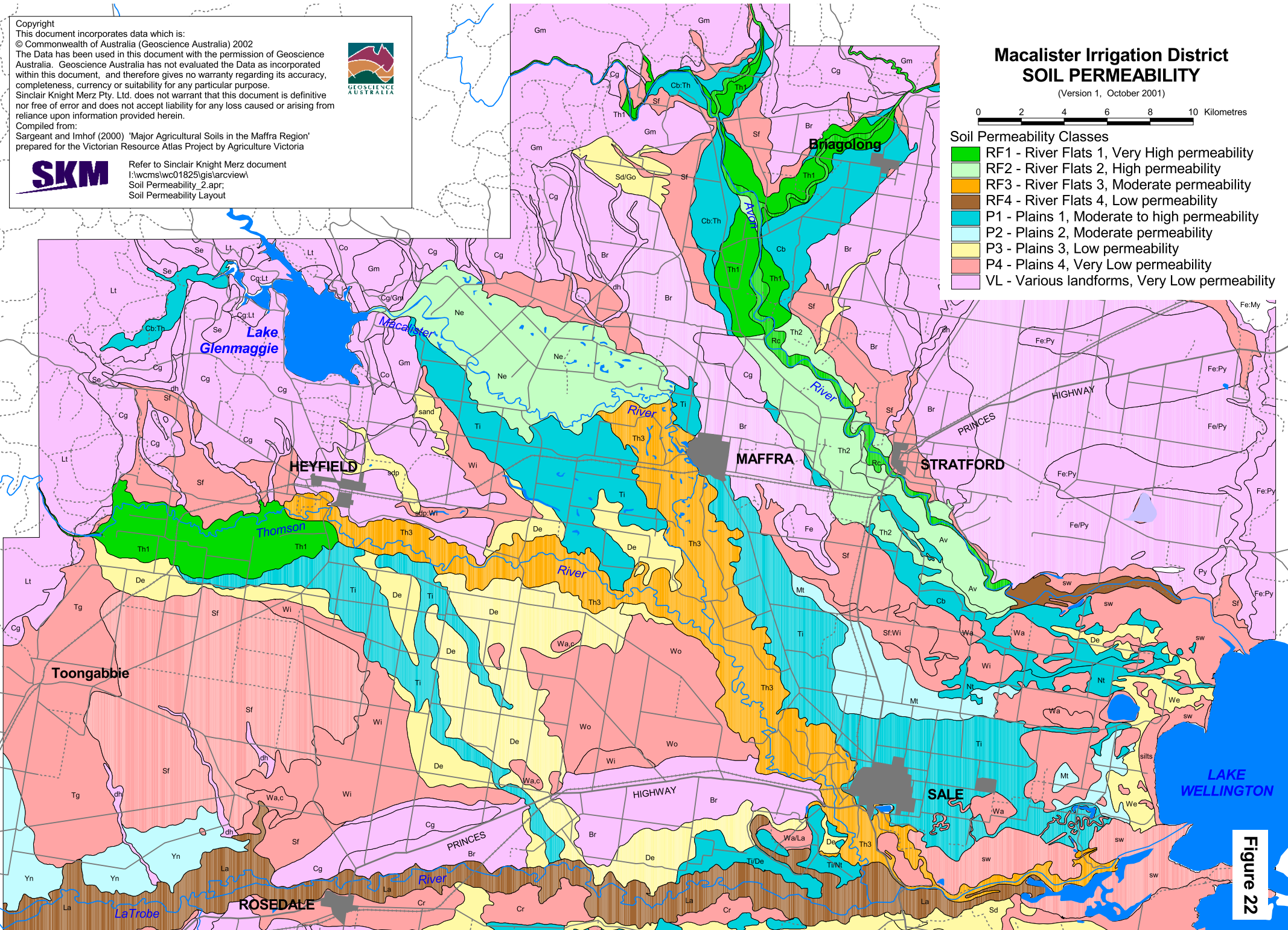


Figure 22